

P-20 Education Partnership
September 22, 2022 at 2:30-4:00 p.m.
101 Walter Library and Zoom

Introductions

- Introductions to the P-20 Executive Committee
 - Robert McMaster
 - Dennis Olson
 - Stephanie Burrage
 - Satasha Green-Stephen

Update on the P-20 Executive Director position

- Joyce Foundation offered to provide seed funding to bring on executive director for P-20
- Actual process will be managed by Minnesota State and Satasha Green-Stephen
- Anticipated date for position to be posted is sometime next week
- Temporary position – posted on Minnesota State Website for 14 days
- Trying to fill position by October 15
- Overall goal is to morph this position over to Minnesota Office of Higher Education
- Full time expectations
- Q: Ability to fund this through existing agency funds? A: We're going to have to get new funding to support this position moving forward.

Update on the four P-20 priorities

- See Priorities slides in meeting materials for overarching themes
- Meredith Fergus: Just received data from state Demographer on Tuesday 9/20. More up to date information is available for Minnesota Educational Attainment graph (page 6)
- Data Use and Capacity (Satasha Green-Stephen)
 - Sub-workgroup is a standing workgroup of the P-20
 - P-20 dashboard is a main goal
- Credentials of value (Dennis Olson)
 - Continued progress, workgroup meets monthly
 - Focused on developing a rubric of quality criteria to apply to all degree and non-degree credentials
 - Alignment to occupations that are in-demand, etc.
 - Q: What has been the relationship with industry? A: More than just OHE, talking a lot broadly across state with how to engage more closely with industry. This work is being done in conjunction with the several groups within the government.
 - Q: Any conversations about the use of badges? A: In terms of the term "badges," it's one of those credential types that can go different ways – is there a third party

association that is helping people attain those badges? There has to be some kind of credibility or regulatory body that ensures skill standards.

- Minnesota State is more looking into micro-credentials rather than “badges,” there’s a lot of conversation out there. “Non-degree completions” also is a term being used.
- Dual Credit (Stephanie Burrage)
 - Group met on June 27, 2020
 - Final report from student feedback should come in late October
 - Q: HLC’s policies on who could teach in K12 world, were tightening credentials for high school teachers who could teach a certain subject... is there any update on HLC and how they’re effecting this work? A: That hasn’t shifted at all, those expectations are still in place and perceived as a barrier by some
 - HLC Just gave an extension to institutions to be able to meet qualifications for concurrent enrollment to September 1 2025 (previously 2022)
- Financial Aid and Literacy (Julie Selander)
 - Communications campaign
 - 48% overall for FAFSA filing
 - Council & Statewide Assembly
 - Aiming for spring 2023
 - Contact Julie Selander (goode021@umn.edu)

Update on SLEDS (Nora Morris and Meredith Fergus)

Administration

- Maira Rosas-Lee will be new MDE SLEDS Coordinator!! Started July 6
- IRB approval came through; our last year of approval under Montana State
- Hiring of the New SLEDS Director: Dr Nora Morris. Started September 13.
- SLEDS Chair and SLEDS Vice Chair changes for 2022-2023
 - Ron Anderson retired this summer, but SLEDS Governance chair term continues through next year; has been replaced by Dr. Satasha Green-Stephens, new Senior Vice Chancellor for Academic and Student Affairs at MinnState.
 - Seeking Vice Chair (who is not a state agency employee)

Data updates

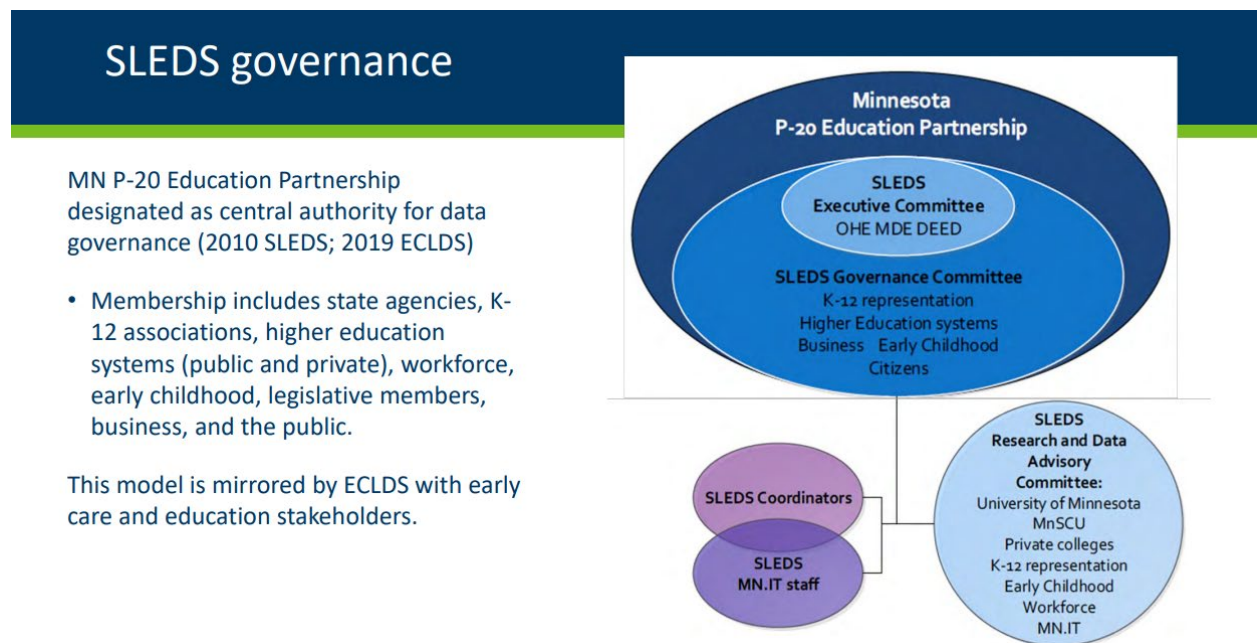
- New tutorials available on the website for self-training
- New data is live on the ECLDS, SLEDS websites as of June 27
- Disability filter moving forward in SLEDS reports, with release on June 27
- Secured reports updated on July 7
- ECLDS Tableau data story reports in progress
- Working on a new Transfer Student Report for colleges
- Added fields to the K12 secured reports focused on Career Pathways of CTE concentrators

Presentation/Recognition

- STATS DC conference - Meredith was invited by Data Quality Campaign to talk about how MCCC data (with Karen's help) was used to inform admissions calculations for Direct Admissions Minnesota and the resulting Infinite Campus software development

(Direct Admissions Minnesota webpage <https://www.ohe.state.mn.us/mPg.cfm?pageID=2484>)

- Minnesota was selected to do a data governance profile for the SLDS state support team (and for the Gates Foundation work);
- Minnesota staff will also serve on the SHEEO SLDS Survey advisory committee
- ECLDS updates:
 - DHS foster care in ECE report
 - ECLDS was named specifically as a data tool for this report. Bill also listed specific programs to include in the report, not all of which are available in ECLDS.
 - DHS request for research access to ECLDS data was approved by ECLDS governance. Data sharing agreement is in the works.



- Q: How can school counselors, for example, know how to access SLEDS? A: Attend a plethora of conferences where we can get into contact with high school contacts
- Q: How do we compare to other states when it comes to SLEDS? A: We're in the top 10 for sure, we have a wealth of information and strong relationships with colleges

Fall 2022 Education and Higher Education enrollment trends

- Education
 - Overall enrollment declined 2.7% in fall 2021, slightly larger than in 2020

- Minnesota was more significantly impacted by enrollment decline than national average
- All sectors saw declined in fall 2021 except Tribal Colleges
- 2021-2022: 871,179 K-12 Students, 21,887 Pre-K Early Childhood
- MN State
 - Enrollment issues with transfer
 - College headcount is 88,733, down about 2.5% from last fall
- U of M
 - Concern for overall health of enrollment
 - Test optional through 2025
 - Attentive to recruiting greater Minnesota students to the cities
 - A lot of competition for international students among other large public Universities
 - Transfer student problem – increase in students wanting to study computer science, we cannot handle that large number
 - Goal is to increase international enrollment by 10%
- Private Colleges
 - Final surveys will be rolling in over next couple weeks